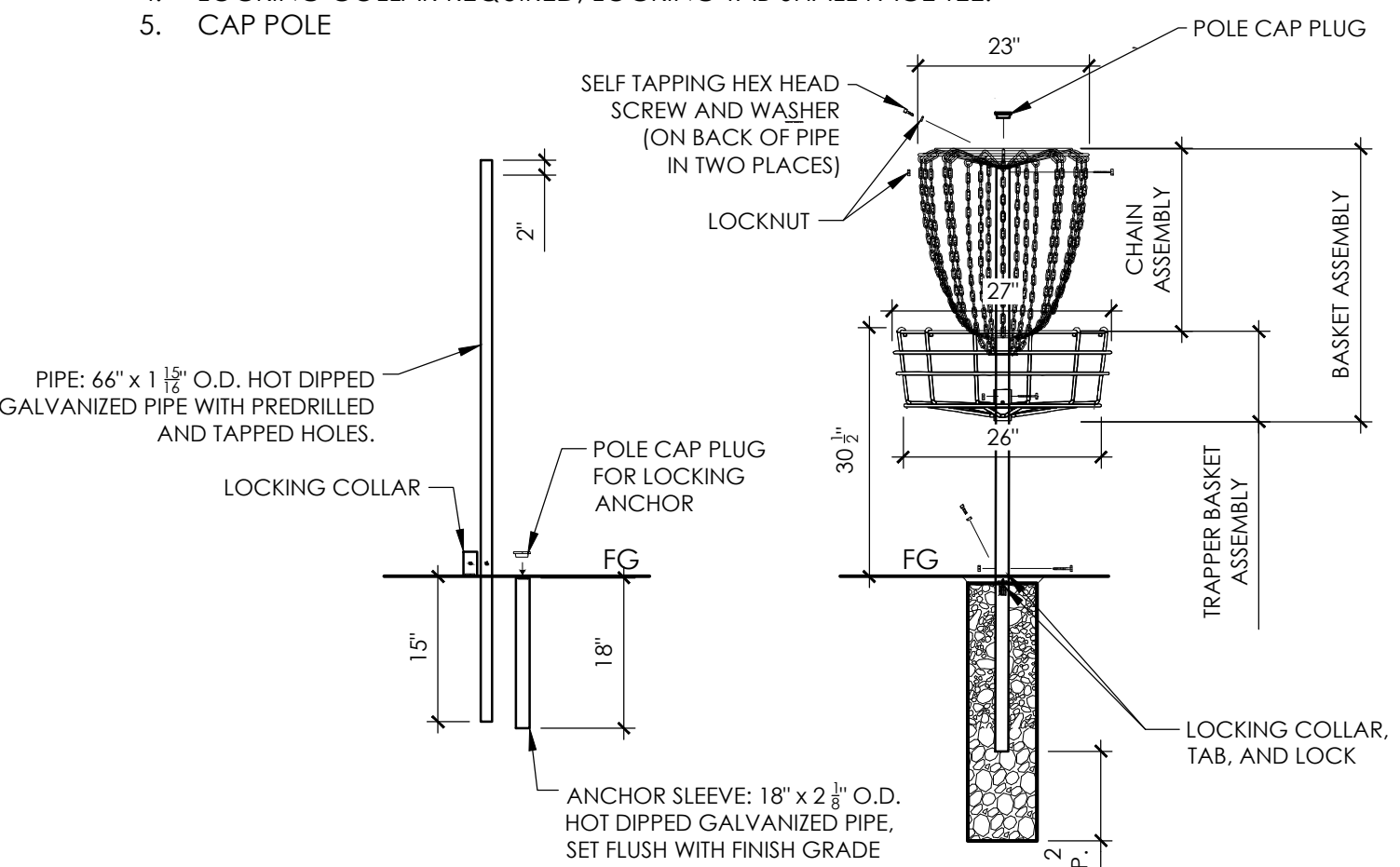
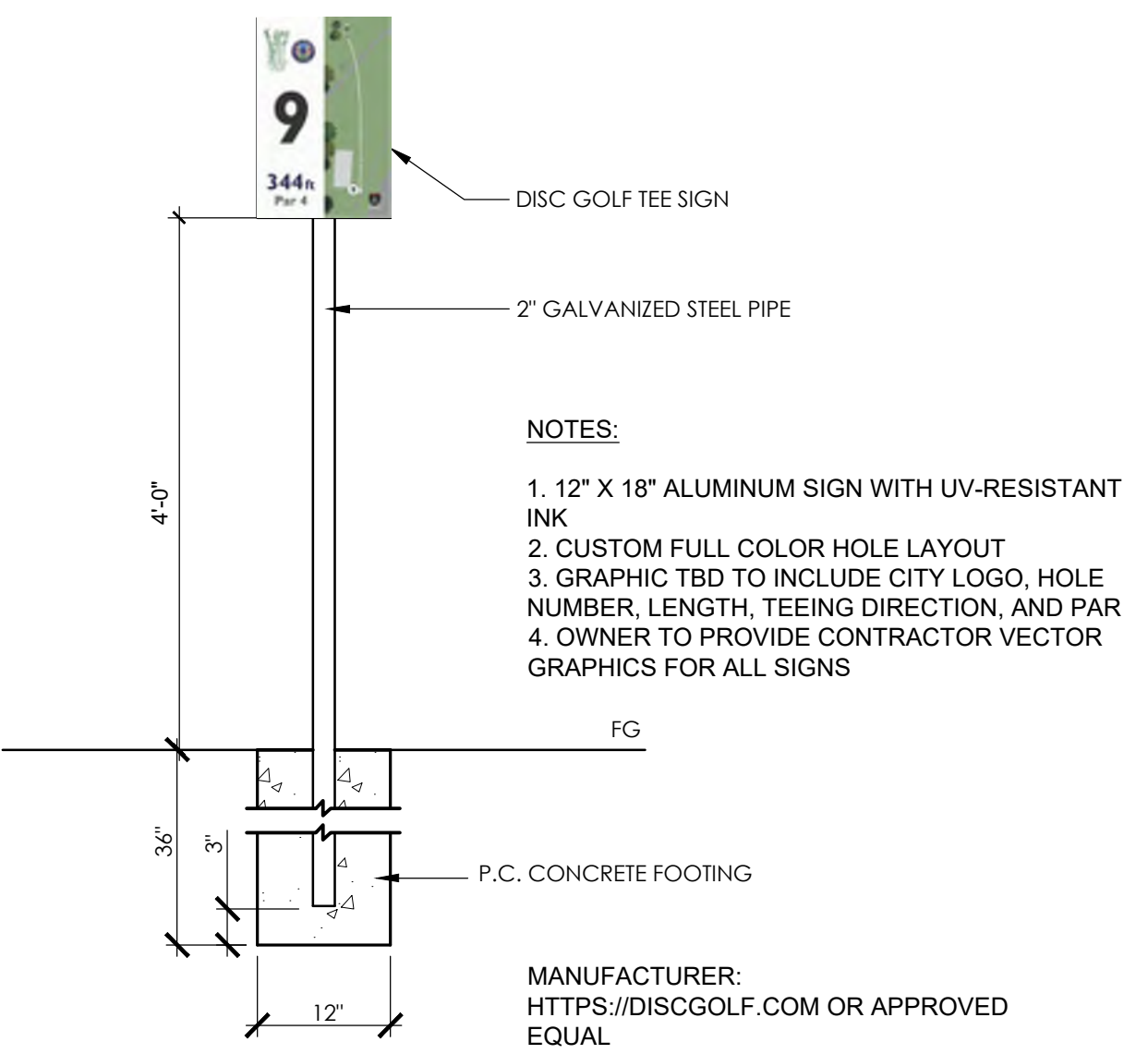


**6 CONCRETE PAVING - PEDESTRIAN**  
1 1/2" = 1'-0" RRM-0601-0616.02-51

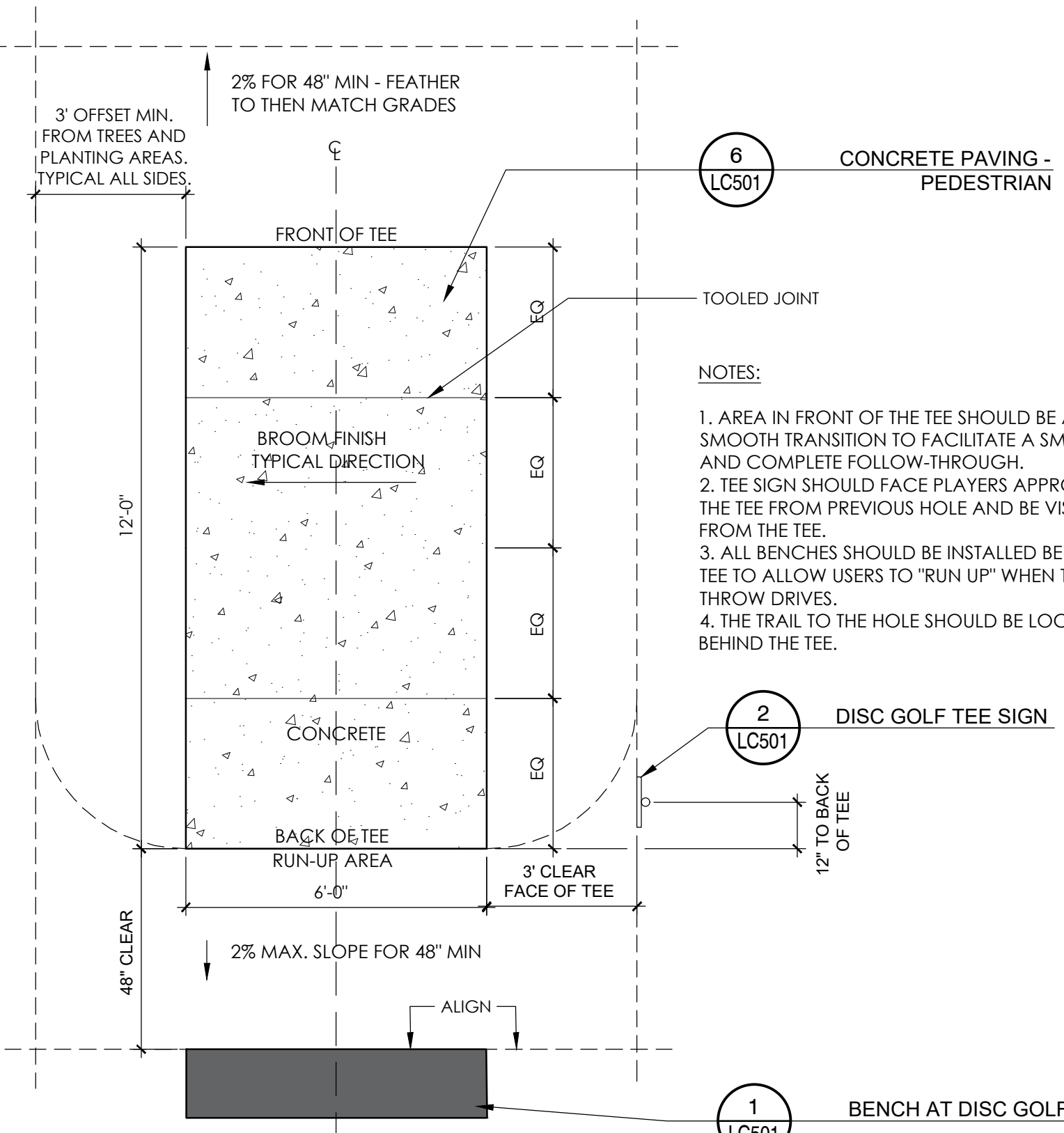
- NOTES:
- INSTALL PER MANUFACTURER DIRECTIONS
  - BASIS OF DESIGN; DGA MACH 7 DISC GOLF BASKET OR APPROVED EQUAL
  - BASKET ASSEMBLY TO INCLUDE THE FOLLOWING MINIMUM:
    - TYPICAL (28) CHAIN ASSEMBLY: 9MM STEEL ROD WELDED AND HOT DIPPED GALVANIZED. ASSEMBLED WITH HEAVY DUTY "S" HOOKS TO ALL FREE MOVEMENT OF CHAINS.
      - 14 OUTER SLIDING LINKS AND CHAINS
      - 7 MIDWAY SLIDER HOOKS AND CHAINS
      - 7 INNER PIPE PROTECTOR AND CHAINS
    - TYPICAL ROD ASSEMBLY: 3/8" STEEL ROD
    - TYPICAL TRAPPER BASKET ASSEMBLY: 9MM STEEL ROD, WELDED AND HOT DIP GALVANIZED 6" SLEEVE - BOLT, HEX HEAD NUT AND NYLON
  - LOCKING COLLAR REQUIRED, LOCKING TAB SHALL FACE TEE.
  - CAP POLE



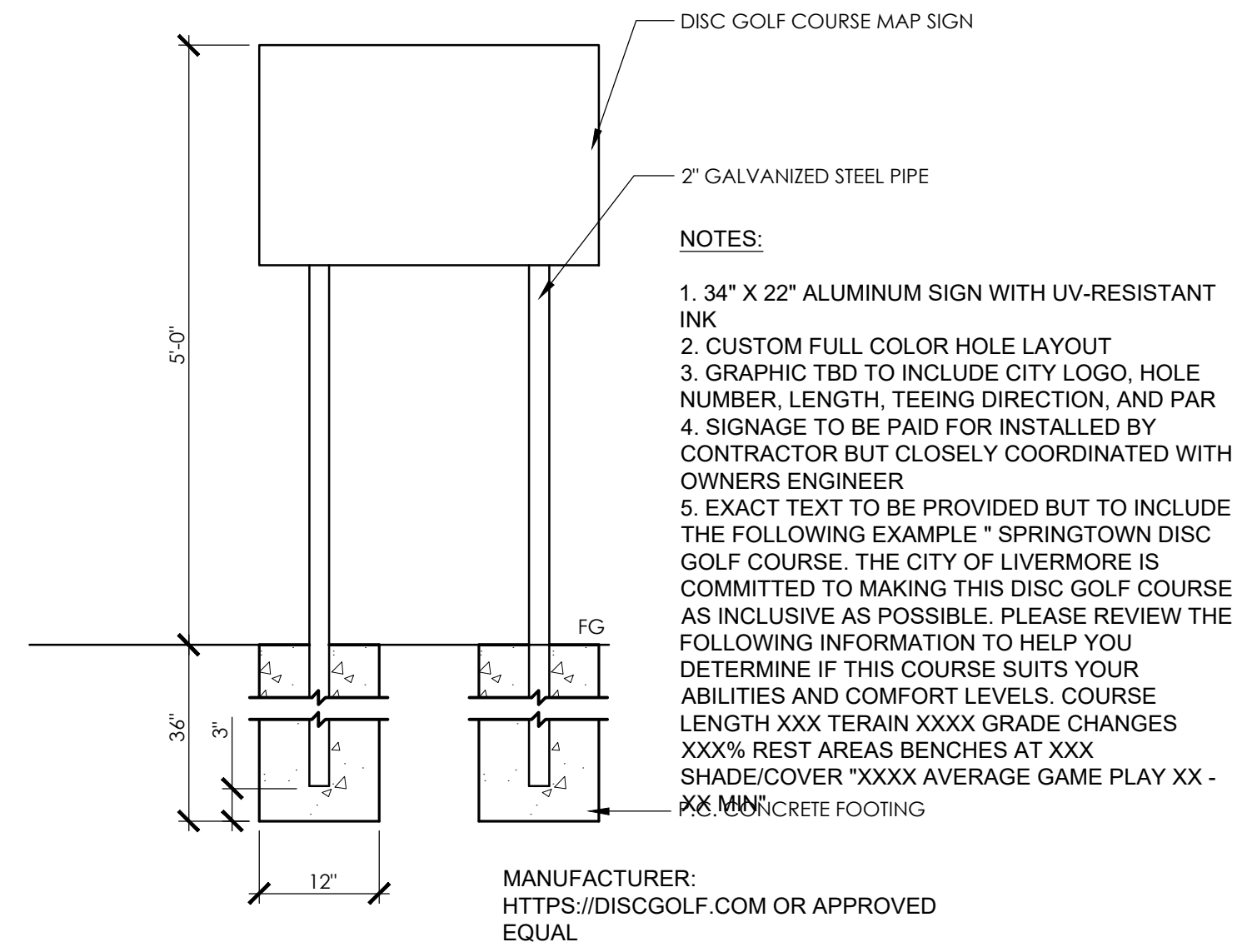
**4 DISC GOLF BASKET, TYPICAL**  
1/2" = 1'-0" RRM-0601-0616.02-01



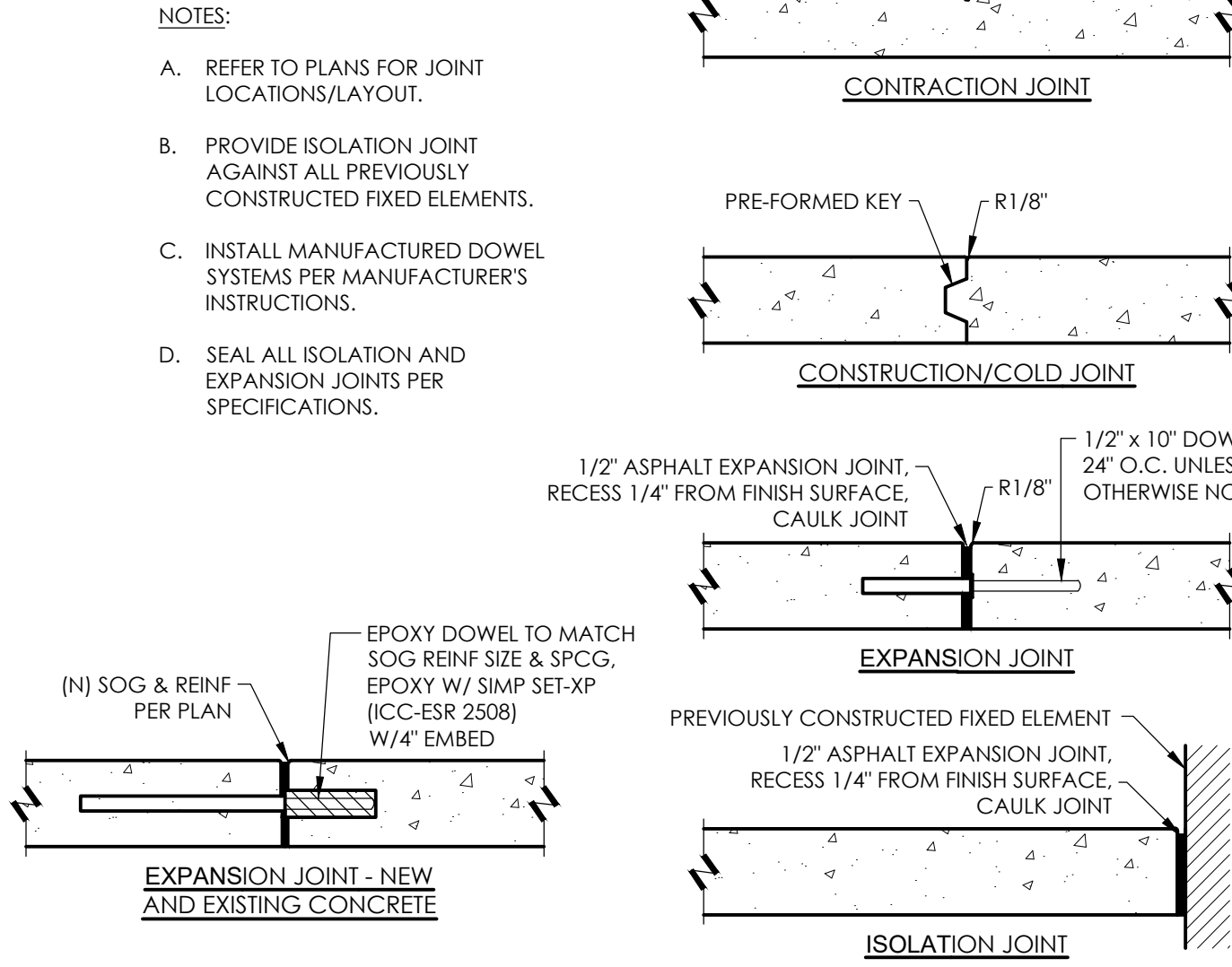
**2 DISC GOLF TEE SIGN**  
3/4" = 1'-0" RRM-0601-0616.02-04



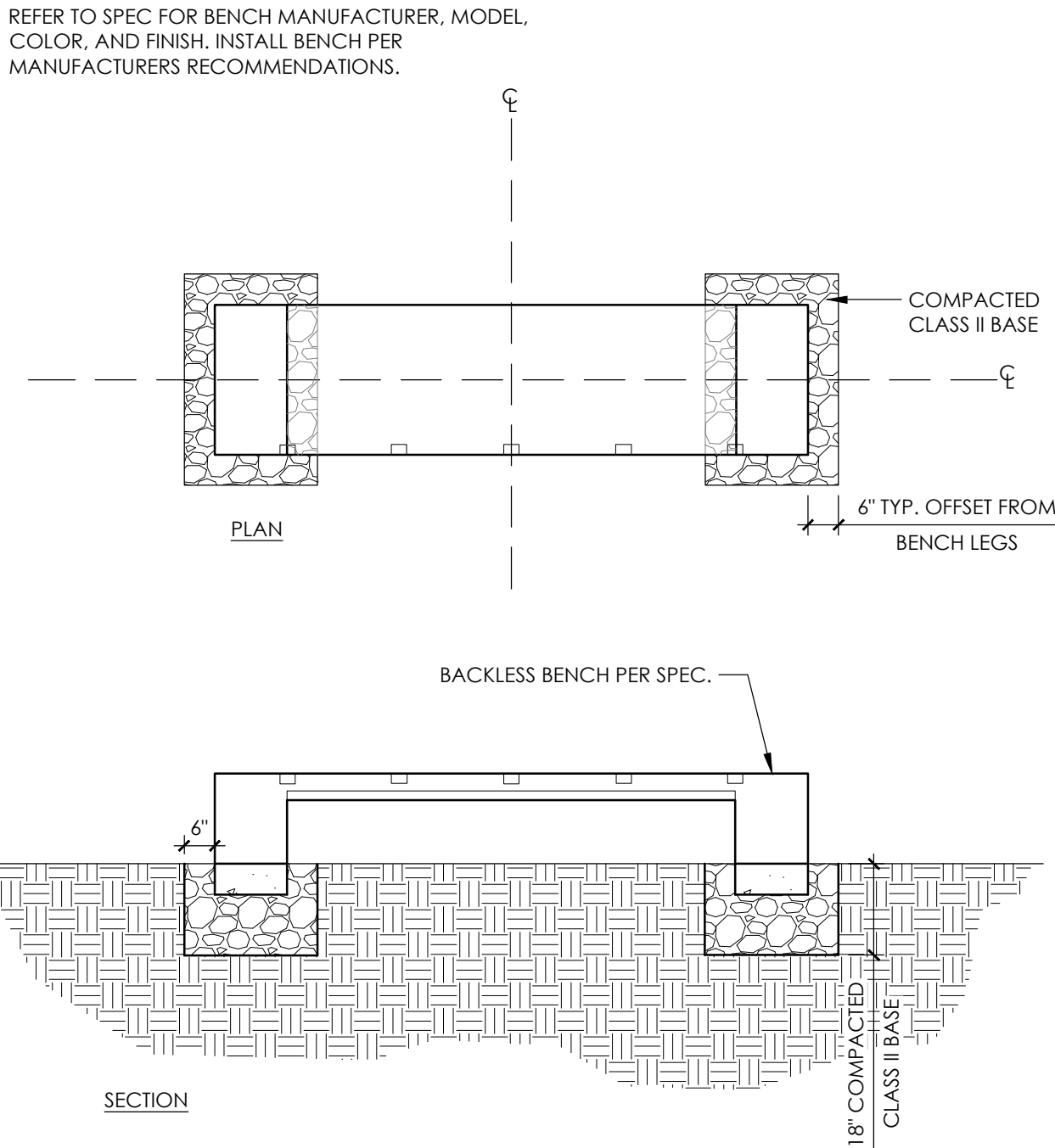
**5 TEE PAD, TYPICAL**  
3/8" = 1'-0" RRM-0601-SPR-83



**7 DISC GOLF COURSE MAP SIGN**  
3/4" = 1'-0" RRM-0601-0616.02-91



**3 CONCRETE JOINTS**  
1 1/2" = 1'-0" RRM-0601-0616.02-33



**1 BENCH AT DISC GOLF**  
3/8" = 1'-0" RRM-0601-0616.02-07

Inch 1 0

rrm design group

rrmdesign.com | (510) 751-4910

THE INCLUDED DRAWINGS, SPECIFICATIONS, DETAILS, DESIGNS AND ARRANGEMENTS REPRESENTED THEREBY ARE AND SHALL REMAIN THE PROPERTY OF RRM DESIGN GROUP AND NO PART THEREOF SHALL BE REPRODUCED, COPIED, EITHER OR USED IN CONNECTION WITH ANY WORK OR PROJECT OTHER THAN THE SPECIFIED PROJECT FOR WHICH THIS DRAWING HAS BEEN PREPARED, AND NO WRITTEN OR ORAL AGREEMENT OR UNDERSTANDING SHALL CONSTITUTE CONCLUSIVE EVIDENCE OF ACCEPTANCE OF THESE RESTRICTIONS, SUBMITTAL OF THESE DOCUMENTS FOR PUBLIC AGENCY REVIEW SHALL NOT BE CONSIDERED A WAIVER OF RRM DESIGN GROUP'S RIGHTS.

2/28/25

RRM IS A CALIFORNIA CORPORATION

APPROVED BY	DATE				
DESIGNED BY: GC/YI	05/02/25				
DRAWN BY: YI/EH					
CHECKED BY: MP		NO.	DATE	BY	REVISIONS

CITY OF LIVERMORE CALIFORNIA

COMMUNITY DEVELOPMENT DEPARTMENT - ENGINEERING DIVISION

City Project No. 2023-19

SPRINGTOWN OPEN SPACE DISC GOLF COURSE

CONSTRUCTION DETAILS

LC501

Sheet 82

Of 84

Scale: NTS